

COVID-19 Return to Research Plan



Richardson's Research Lab

Swain Hall Room 220 and 219

August 2020 to May 2021

Table of Contents



Cover Page	1
Table of Contents	2
Basic Information about COVID-19 and Health Care Services.....	3
Research requirements before you get into lab.....	4
Personal Protective Equipment needed for lab.....	5
Research work areas.....	6
Starting your research in the lab.....	7
Ending your research in the lab.....	8
Research in the field or campus.....	9

Richardson's COVID-19 Research Plan

Basic Information about COVID-19 and Health Care Services

Watch for symptoms

People with COVID-19 have had a wide range of symptoms reported – ranging from mild symptoms to severe illness. Symptoms may appear **2-14 days after exposure to the virus**. People with these symptoms may have COVID-19:

- Fever or chills
- Cough
- Shortness of breath or difficulty breathing
- Fatigue
- Muscle or body aches
- Headache
- New loss of taste or smell
- Sore throat
- Congestion or runny nose
- Nausea or vomiting
- Diarrhea

Websites to help you track and understand COVID-19

[WHO Webpage](#)

[CDC's COVID-19 Webpage](#)

[SCDHEC Webpage](#)

Coastal Carolina University's Plan to deal with COVID-19

[Coastal Comeback Plan](#)

Coastal Carolina University's Student Health Services

[Coastal's Student Health Services](#)

Richardson's COVID-19 Research Plan

Research Requirements before you get in the lab

- You must meet (Zoom Meeting) as a research team with Prof Richardson to discuss this entire document about Richardson's COVID-19 Research Plan. After this meeting you must email me a confirmation that you have read this plan, attended the meeting and agree to do this research on your own free will.
- All members of the team must complete the online training EHS 2065 COVID-19 Public Health Practices. Website will be provided by Prof Richardson when it is available.
- You must agree to do the Self-Certification form every two weeks and turn it into Prof Richardson on time. Forms will be provided by Prof Richardson when it is available.
- Must agree to the daily self-monitoring guidelines as outlined by Coastal Carolina University.
- You must agree to email/ text me the times and dates you are in lab the day you are in lab. I have to keep detailed records on who was in lab and for how long.
- MRSA project research Assistants must complete Citi training before they are allowed to collect samples.
- No one is allowed to work in the lab until Prof Richardson approves of your training and you have demonstrated appropriate skill and safety.
- You must be aware of the PPE requirements and use them to enter the lab
- You must be aware of the appropriate research work areas in the lab.
- You must have Prof Richardson cell number and he must have yours. You must check in and out of lab at all times, even if he is right next to you.
- You must schedule your research time with Prof Richardson and you may only enter the lab when you are on the schedule or with verbal permission from Dr Richardson (must be notified face to face).

Richardson's COVID-19 Research Plan

Personal Protective Equipment (PPE) needed for lab

- Must have a mask covering your face at all times
- Must have safety glasses and goggles on at all times
- Must wear gloves in the lab at all times
- Must wear appropriate lab attire that minimizes any exposure to chemicals or biologicals
- Must wear closed toe shoes in the lab
- Must follow the University's guidelines on lab safety

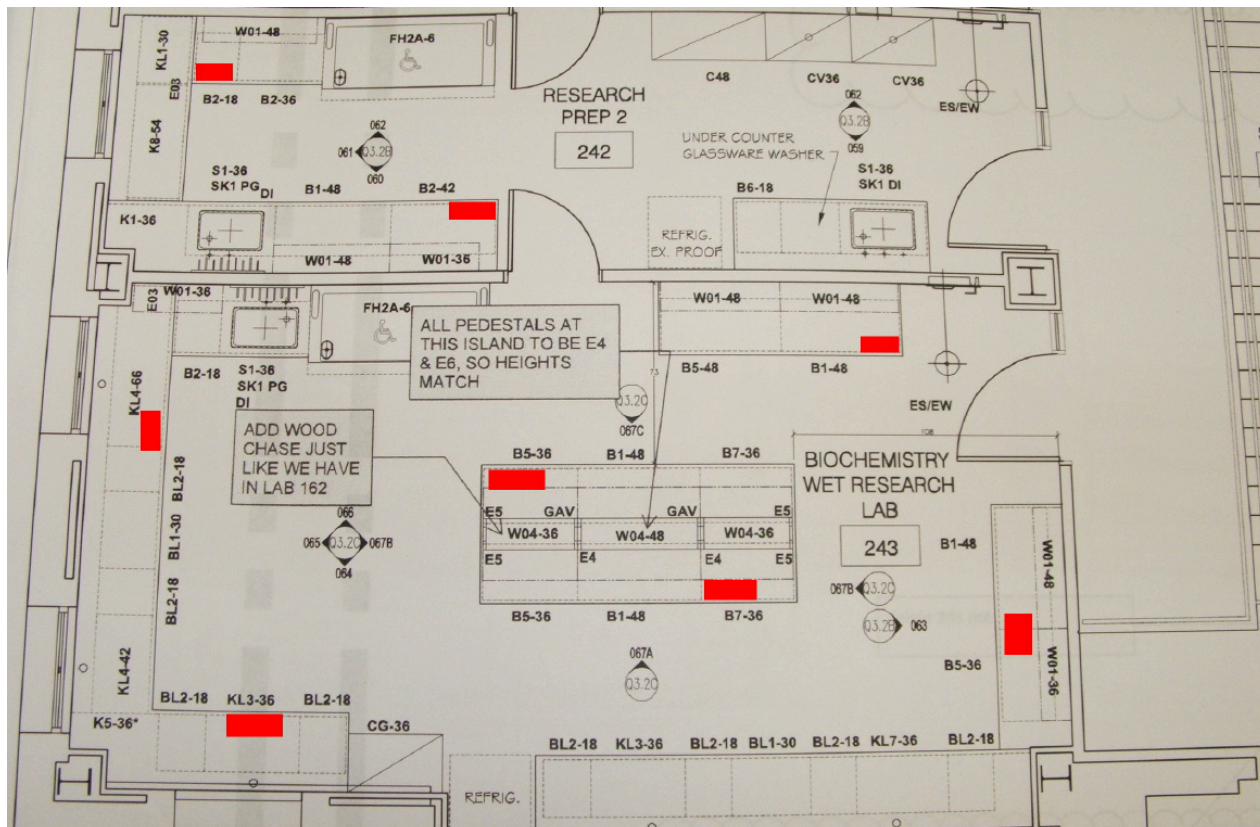


Richardson's COVID-19 Research Plan

Research Work Areas

Please note that while you are in the lab you must maintain 6 feet of distance between you and EVERY person in the lab. If you need to move please communicate to those that might be within six feet of your pathway to an instrument. You may only work at the locations of the red boxes. Please note the only exit and entrance to the lab is through 219.

YOU MAY NOT USE THE DOOR IN 220 TO EXIT/ENTER UNLESS IT IS AN EMERGENCY!!



NO MORE THAN 6 PEOPLE AT A TIME IN ROOM 220

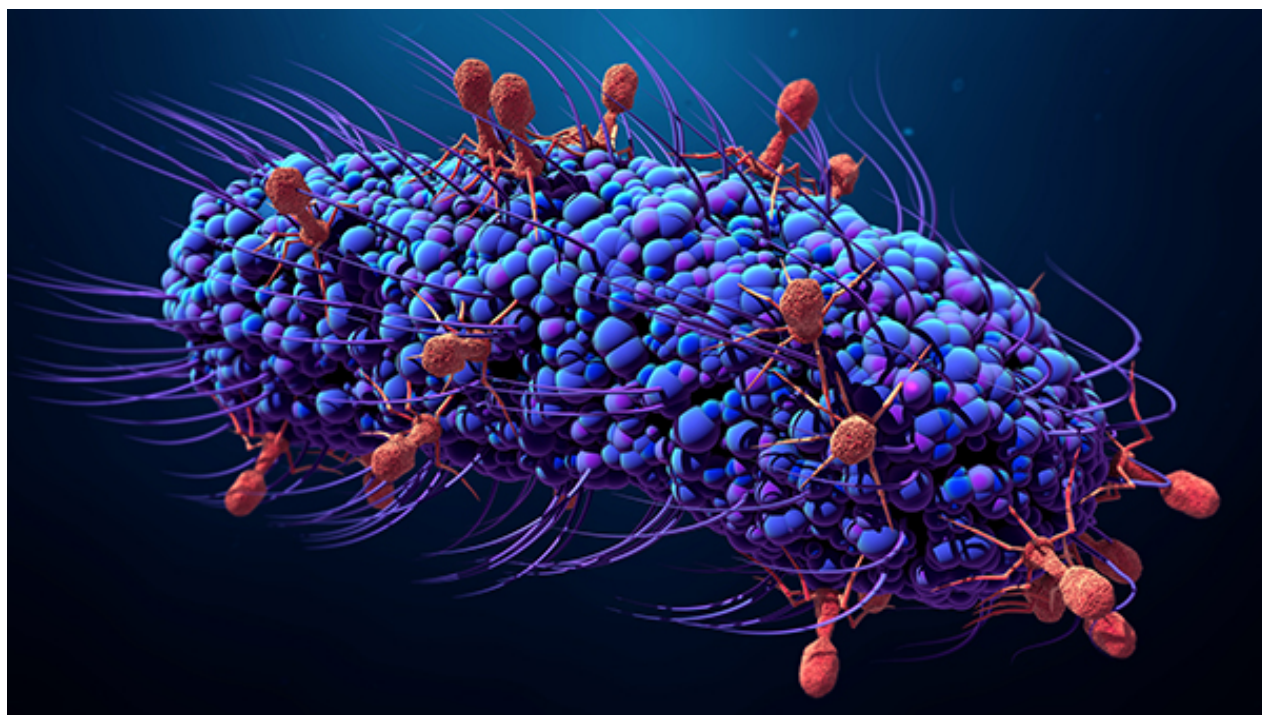
NO MORE THAN 2 PEOPLE AT A TIME IN ROOM 219

These maximum capacity must be followed at all times, no exception except in an emergency.

Richardson's COVID-19 Research Plan

Starting your research in the lab

1. Before you enter make sure your mask is on.
2. Text Prof Richardson about your research in Swain 219/220
3. Enter the lab through Swain 219
4. Wash your hands in the Sink
5. Put on all PPE (All PPE can be stored in your lab drawer)
6. Disinfect your research work space before use
7. Now you can start your daily research. Stay 6 feet from any person that might also be working in the lab.



Richardson's COVID-19 Research Plan

Ending your research in the Lab

1. Put everything back where you found it
2. Disinfect your research work space
3. Clean all glassware used
4. Remove all PPE and store as you best see fit. Please leave mask on at all times.
5. Wash hands in the sink
6. Leave the lab through the door to room 219
7. Text Prof Richardson and let him know you are done research for the day



Please remember to check in and out of lab

Richardson's COVID-19 Research Plan

Research in the field or on campus

Environmental Project

- *Must text Prof Richardson when you head out to collect samples*
- *Must wear a mask while collecting since you are on campus*
- *Must maintain 6 feet of spacing from your partner while you collect*
- *One person collects all the samples and the other person records all the data*
- *The person that collects the sample will also run the water quality tests*
- *Must follow **Starting your research in the lab** when you return to lab*
- *Must follow **Ending your research in the lab** when you leave to lab*

Arbovirus Project

- *Set up the mosquito traps in a secure location overnight*
- *There can be no chance of rain due to the battery*
- *If you are collecting with a person you must wear a mask and must maintain 6 feet of spacing from everyone while you collect.*
- *Must follow **Starting your research in the lab** when you return to lab*
- *Wipe samples down when you return to lab to disinfect the samples if more than one person involved in collection*
- *Must follow **Ending your research in the lab** when you leave*

MRSA Project

1. *Must text Prof Richardson when you head out to collect samples*
2. *Must wear a mask while collecting since you are on campus*
3. *Must maintain 6 feet of spacing from everyone while you collect*
4. *Put on a new set of gloves and hand collection material to volunteer*
5. *You must allow the volunteer to collect the nose swab*
6. *You must allow the volunteer to collect the ear swab*
7. *You can only provide directions, no contact*
8. *Collect sample in special closed rack and dispose of gloves*
9. *If collecting again go to step 4 and repeat*
10. *Must follow **Starting your research in the lab** when you return to lab*
11. *Wipe samples down when you return to lab to disinfect the samples*
12. *Must follow **Ending your research in the lab** when you leave*

